

exclusively sponsored by:



**Improving Healthcare Facilities Operations
with Situational Awareness**



Today's Webcast starts at 1pm Eastern.

Thank you for joining us.

exclusively sponsored by:



Improving Healthcare Facilities Operations with Situational Awareness



Today's Moderator



Cathy Jakicic

Editor



exclusively sponsored by:



Improving Healthcare Facilities Operations with Situational Awareness



Today's Presenter



Eoin O'Driscoll
PhD, PE, CEM

Principal Engineer,
DSA, Inc. (Data Systems Analyst)

Eoin O'Driscoll is a graduate of Trinity College Dublin, Ireland with a Mechanical Engineering PhD, a Bachelor of Science (Engineering with Management), and a Postgraduate Diploma (Statistics). Eoin's specific areas of expertise are: energy management, building automation optimization, and smart building implementations. Eoin is a licensed Professional Engineer (PE) in the Commonwealth of Virginia and an AEE Certified Energy Manager (CEM). In the Healthcare vertical, Eoin has developed and implemented multi-million dollar facility optimization projects designed to enhance energy performance and create more resilient critical environments. Additionally, Eoin is currently authoring a book for Elsevier Publishing titled Smart & Resilient Buildings: A Data-Driven Future.

exclusively sponsored by:



Improving Healthcare Facilities Operations with Situational Awareness



Learning Objectives

- Determine how to achieve operational transparency in hospital facilities
- Discuss the value of a real-time situational awareness platform
- Define a central historian and the data-driven concepts (fault detection, condition-based maintenance and machine learning) it enables
- Identify how to achieve one common operating picture of a facilities environment

exclusively sponsored by:



Improving Healthcare Facilities Operations with Situational Awareness



To ask questions:

Please use the question and answer panel on the right-hand side of the screen, and send to all panelists.

exclusively sponsored by:



Improving Healthcare Facilities Operations with Situational Awareness



Presentation Handouts

All participants will receive an e-mail by the end of the day with a link to download a PDF copy of today's presentation slides.

exclusively sponsored by:



Improving Healthcare Facilities Operations with Situational Awareness



Polling Questions

Today's event will include multiple-choice polling questions.

Your participation is appreciated.

exclusively sponsored by:



**Improving Healthcare Facilities Operations
with Situational Awareness**



CEU Information



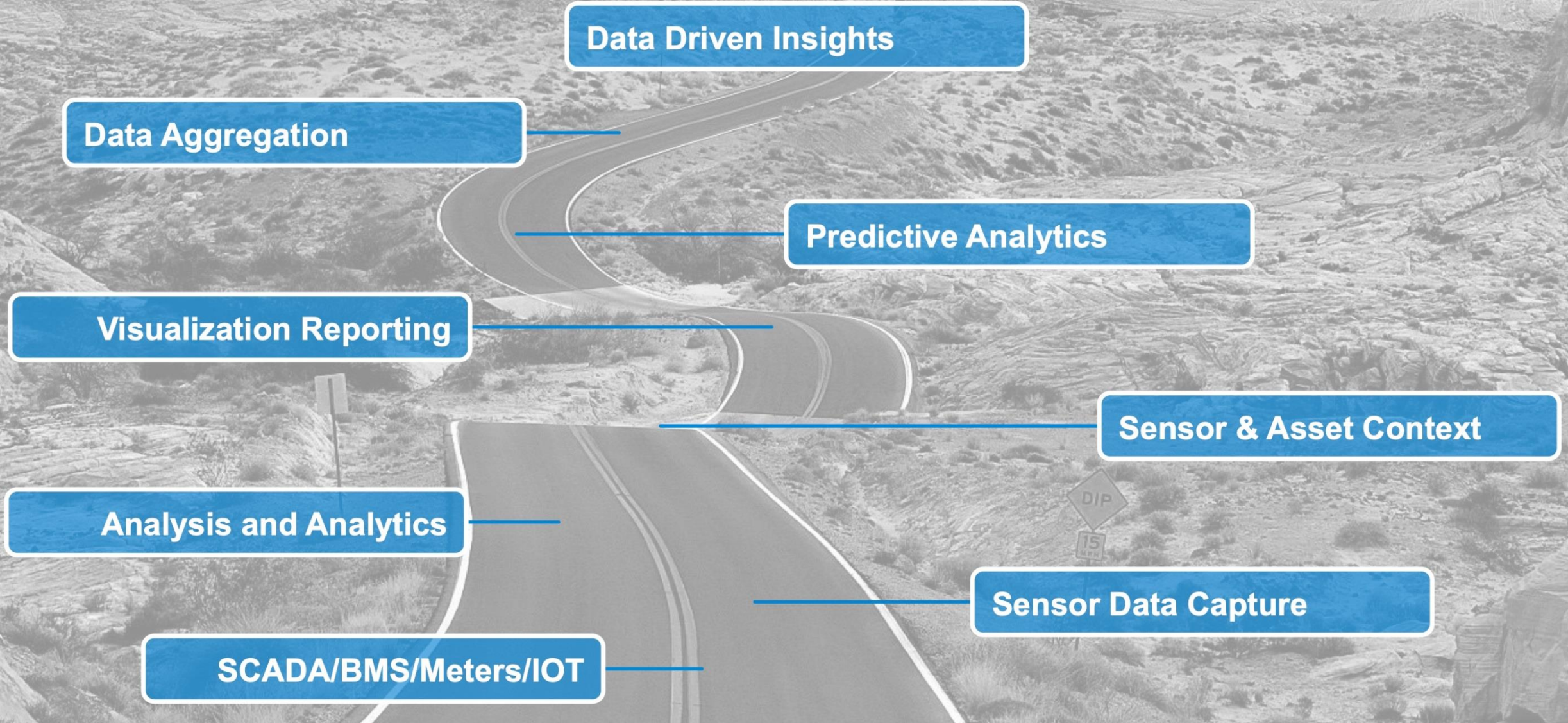
Trade Press Media Group has been accredited as an authorized Provider by the International Association for Continuing Education and Training (IACET), 1760 Old Meadow Road, Suite 500, McLean VA 22102; (703) 506-3275.

To successfully earn 0.1 CEUs, you must attend the entire webcast and earn a 70% or higher on the assessment.

The PI System: Transform Your World Through Data

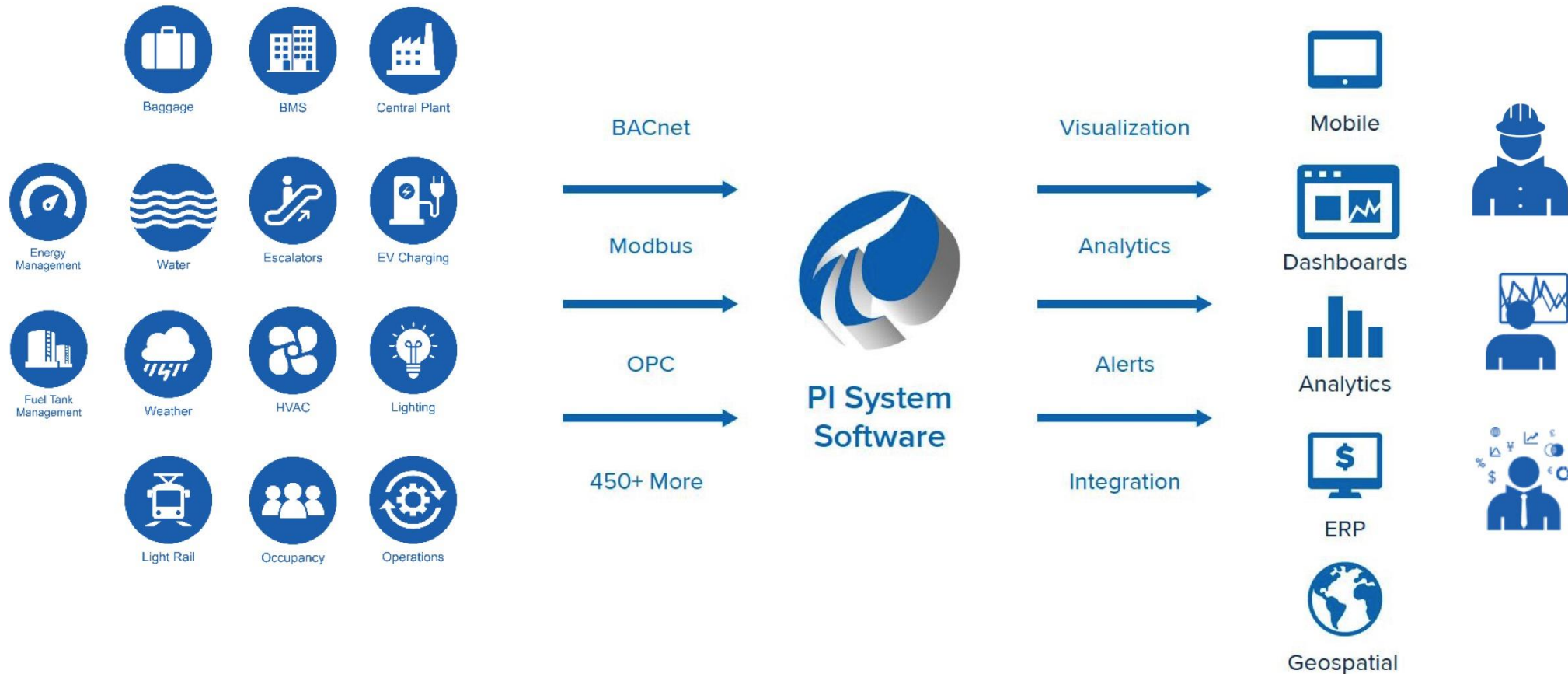


Journey to Operational Intelligence

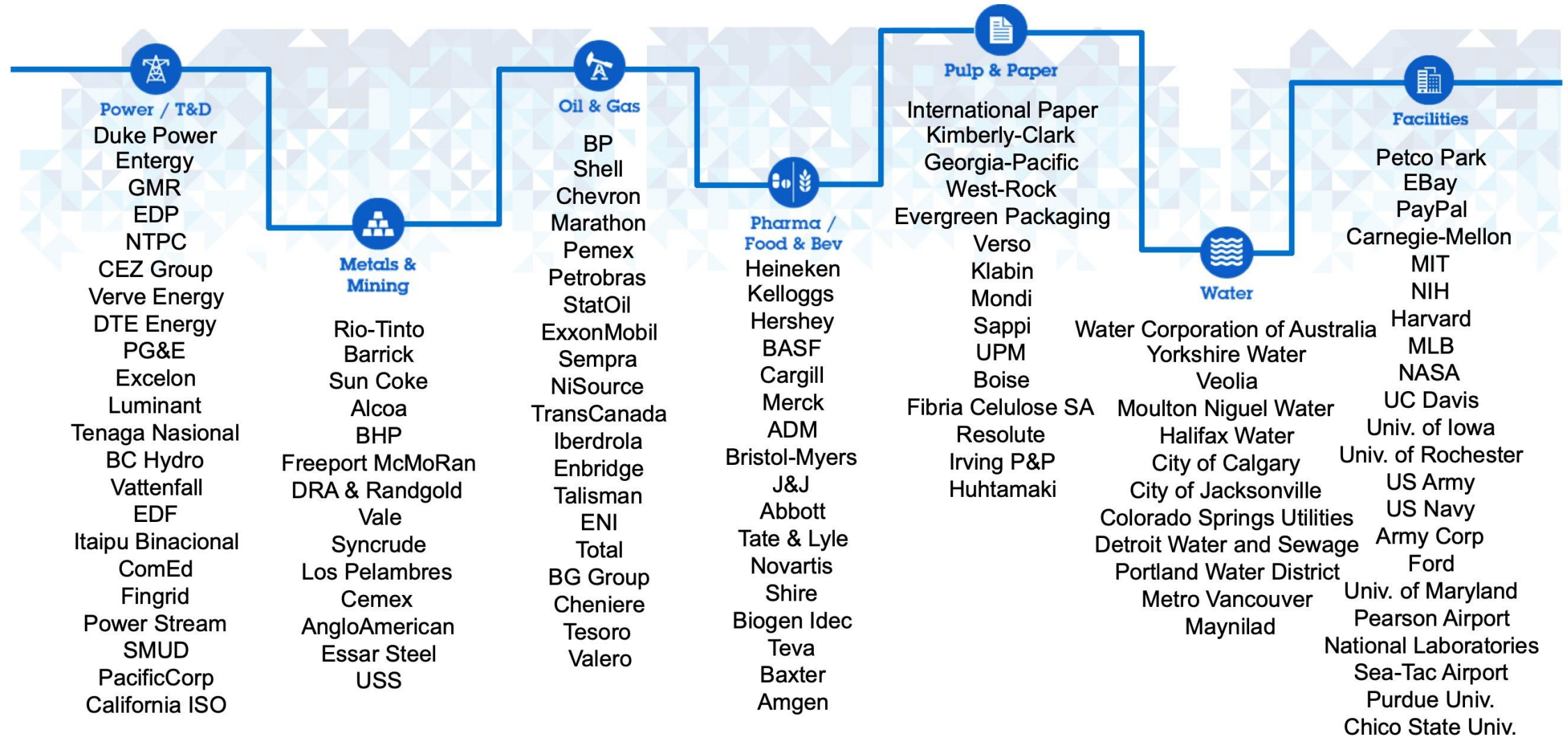


The PI System: Insight on Demand

The Right Data to the Right People, at the Right Time in the Right Format



Small Sampling of Our Customers...



The PI System: Proven



Improving Healthcare Facilities Operations with Situational Awareness



Eoin O'Driscoll, PhD, PE, CEM

*Critical Infrastructure Protection
Practice Lead*



Disclaimer



- Situational Awareness
- Operational Intelligence
- Healthcare Facilities Challenges
- Data-driven Improvement Concepts
- Proven Applications



Situational awareness is the perception of events with respect to time or space, the comprehension of their meaning, and the projection of their future status

Drivers & Challenges



Patient Care



Resilience



**Reduce Costs;
Improve Outcomes**



**Reporting
Requirements**



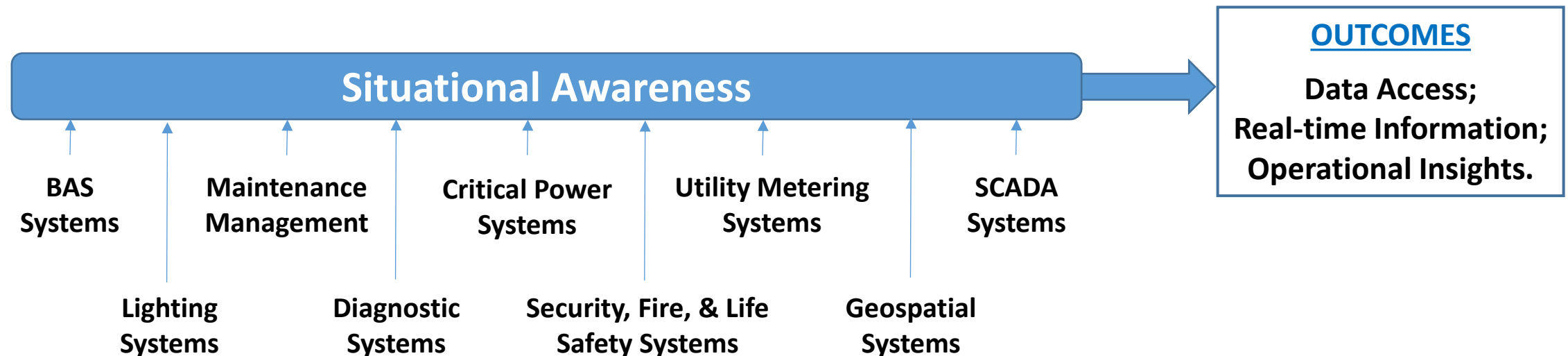
**Energy Intensive
Operation (24x7)**

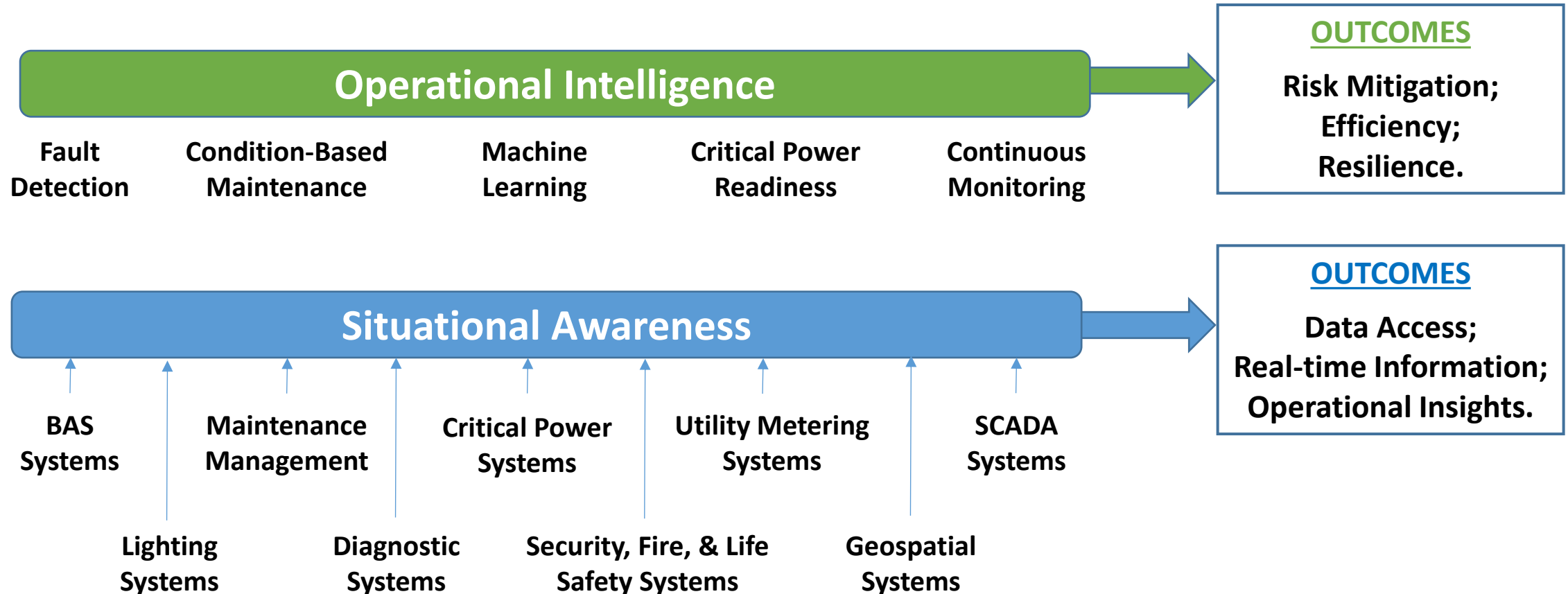


Reactive Posture



Limited Insights





exclusively sponsored by:



**Improving Healthcare Facilities Operations
with Situational Awareness**

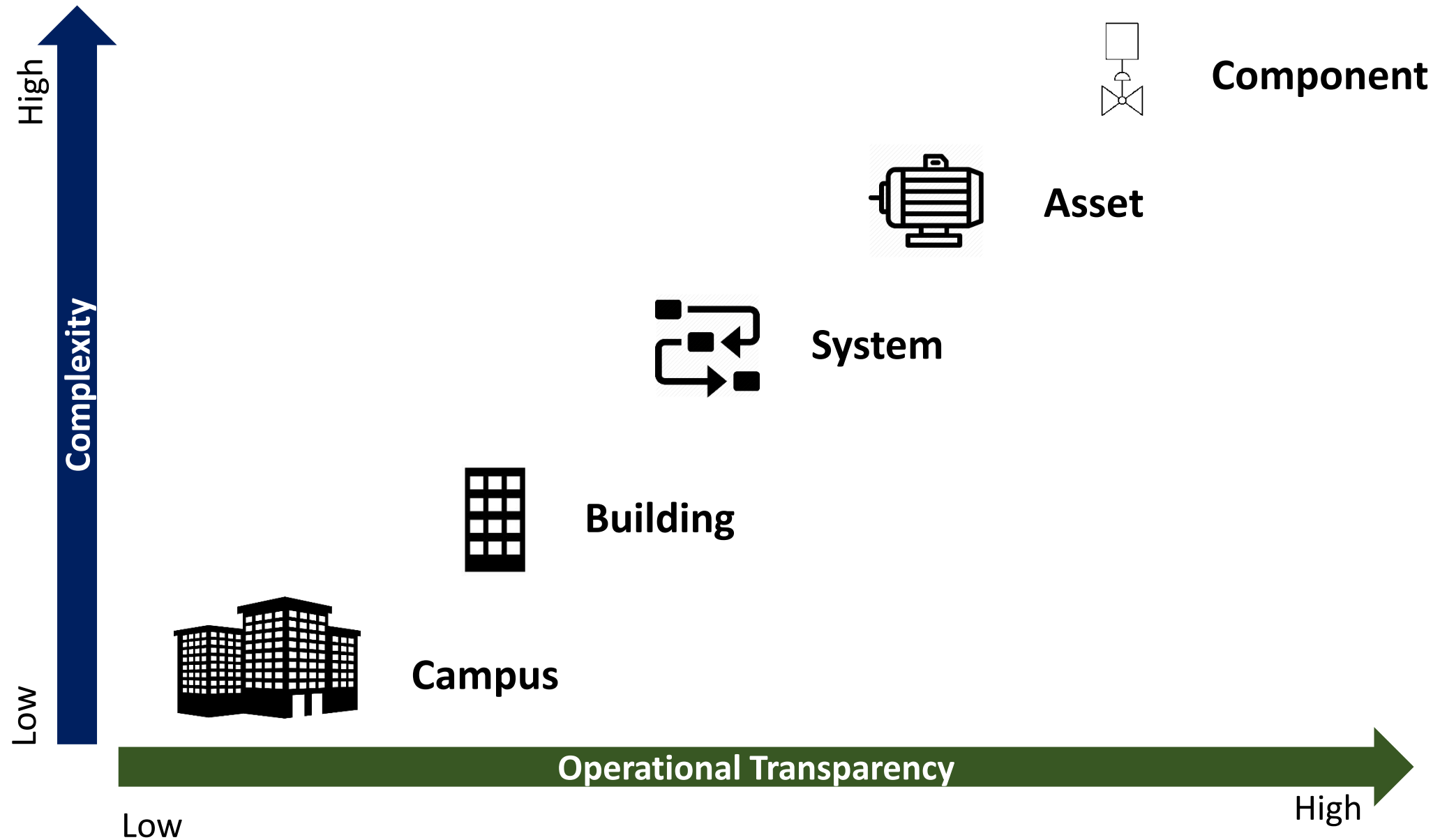


Polling Question

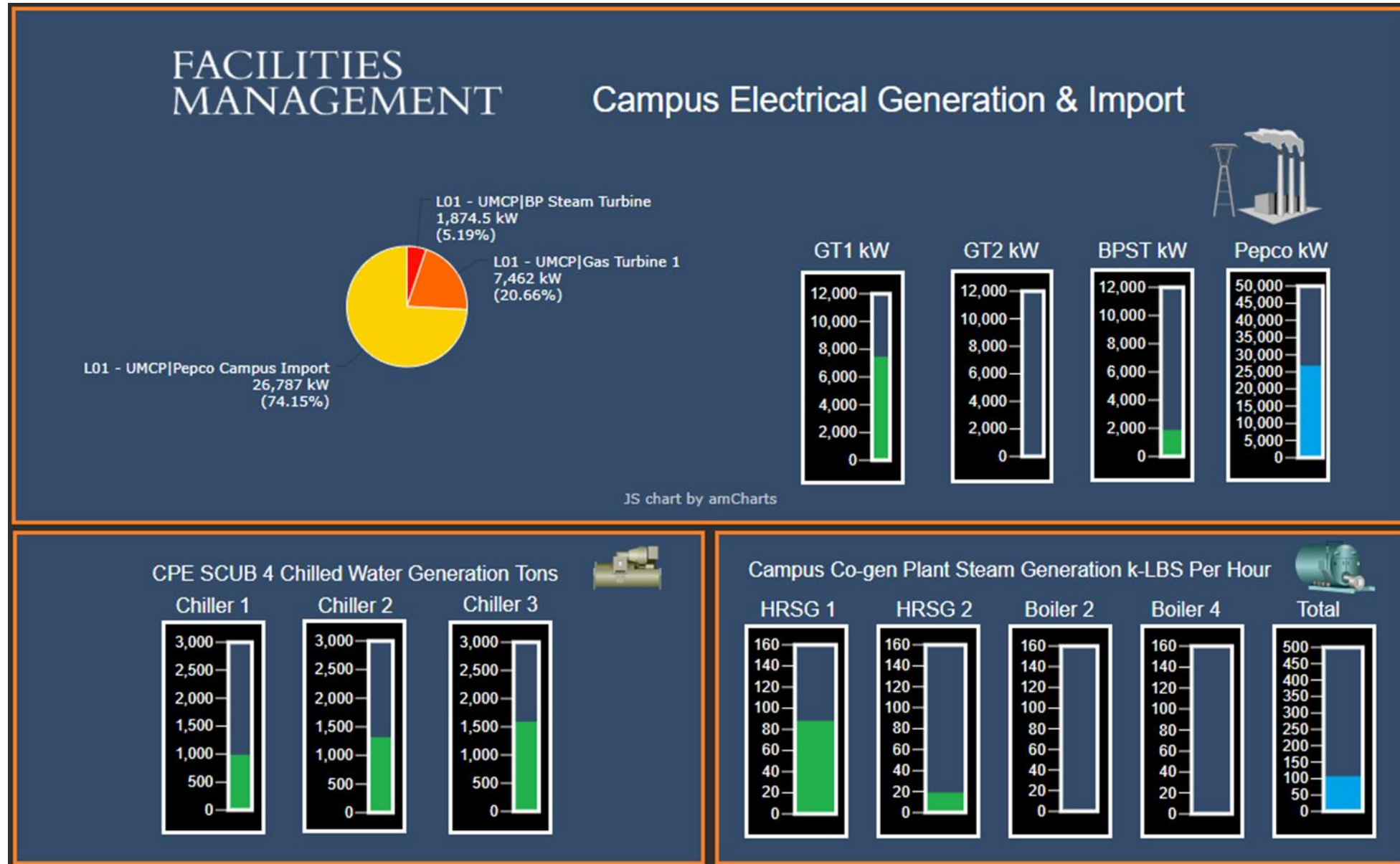
Please make your selection on the right side of the screen.

Your participation is appreciated.



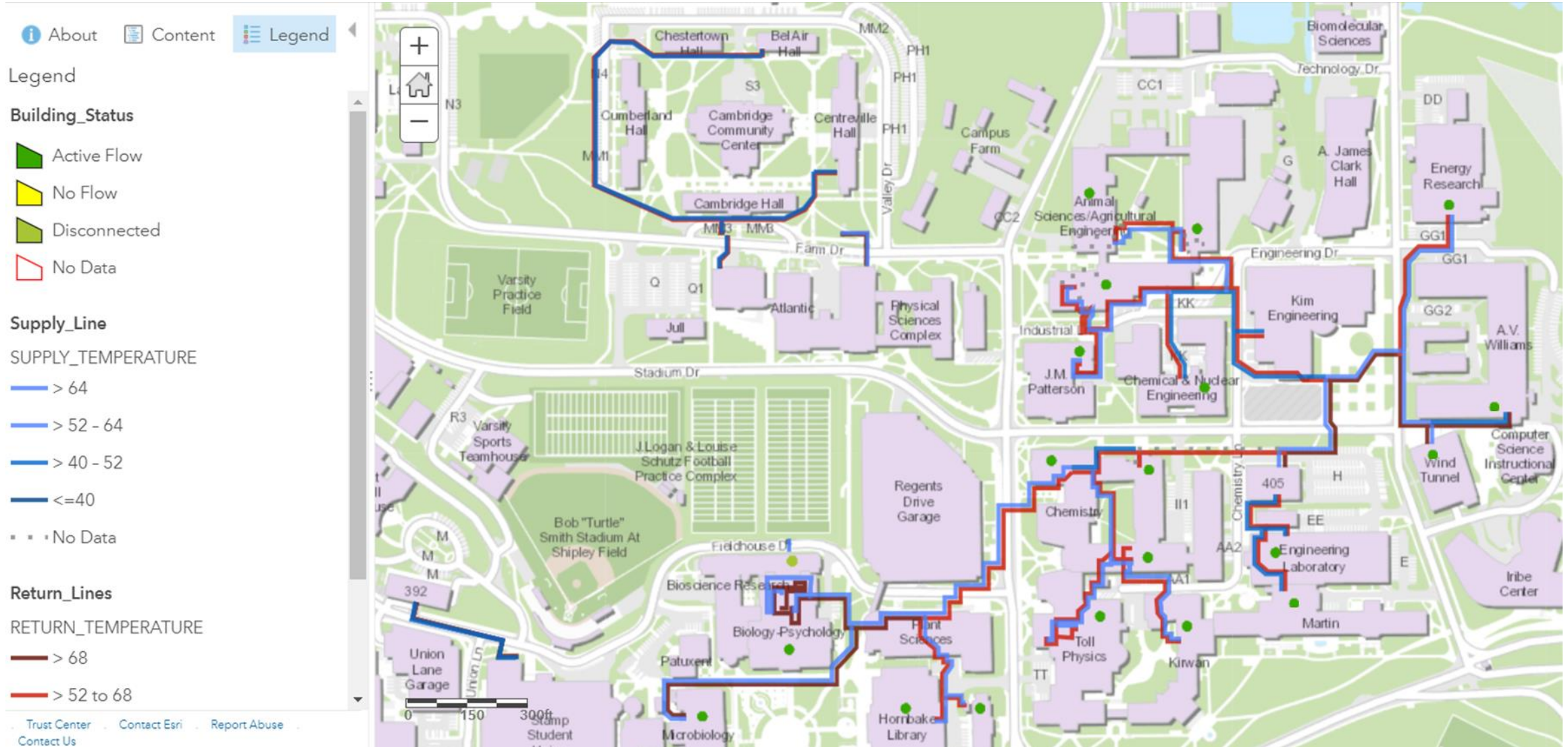


Utility Overview



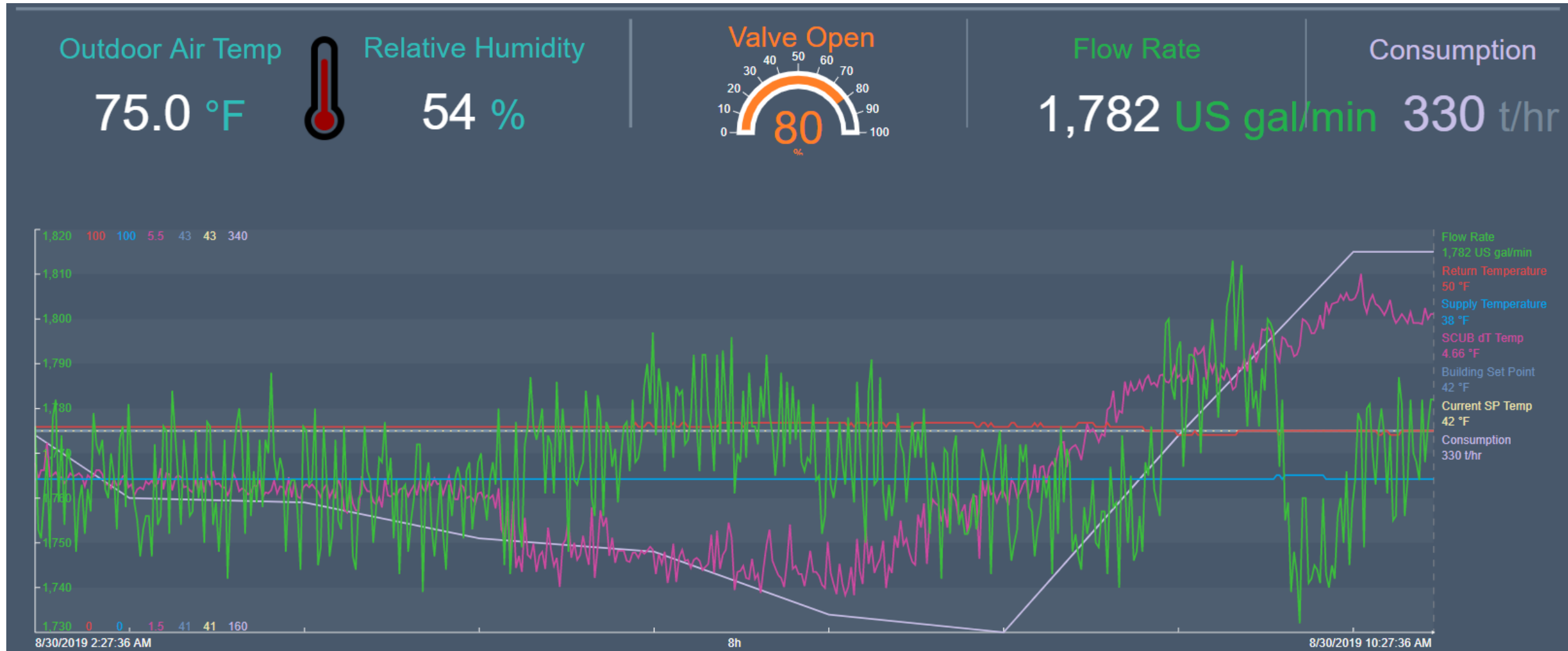
Resilience: Utility Monitoring

The purpose of this integration is to provide a real-time summary of all chilled water system assets across the campus. The map is fully interactive and each element dynamically links to an asset-specific or building-specific screen.

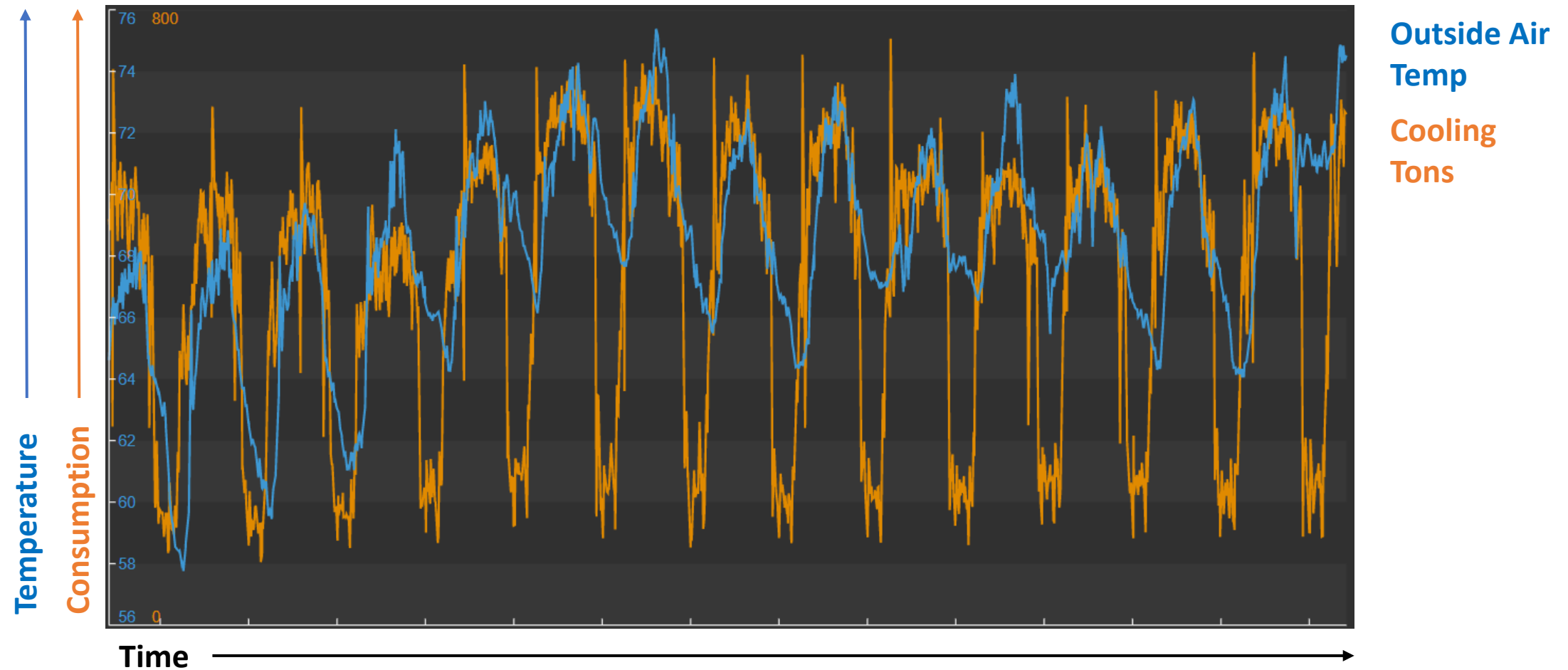


Healthcare Facilities Today – Improving Healthcare Facilities Operations with Situational Awareness

Resilience: Utility Monitoring



Resilience: Utility Monitoring



exclusively sponsored by:



Improving Healthcare Facilities Operations with Situational Awareness



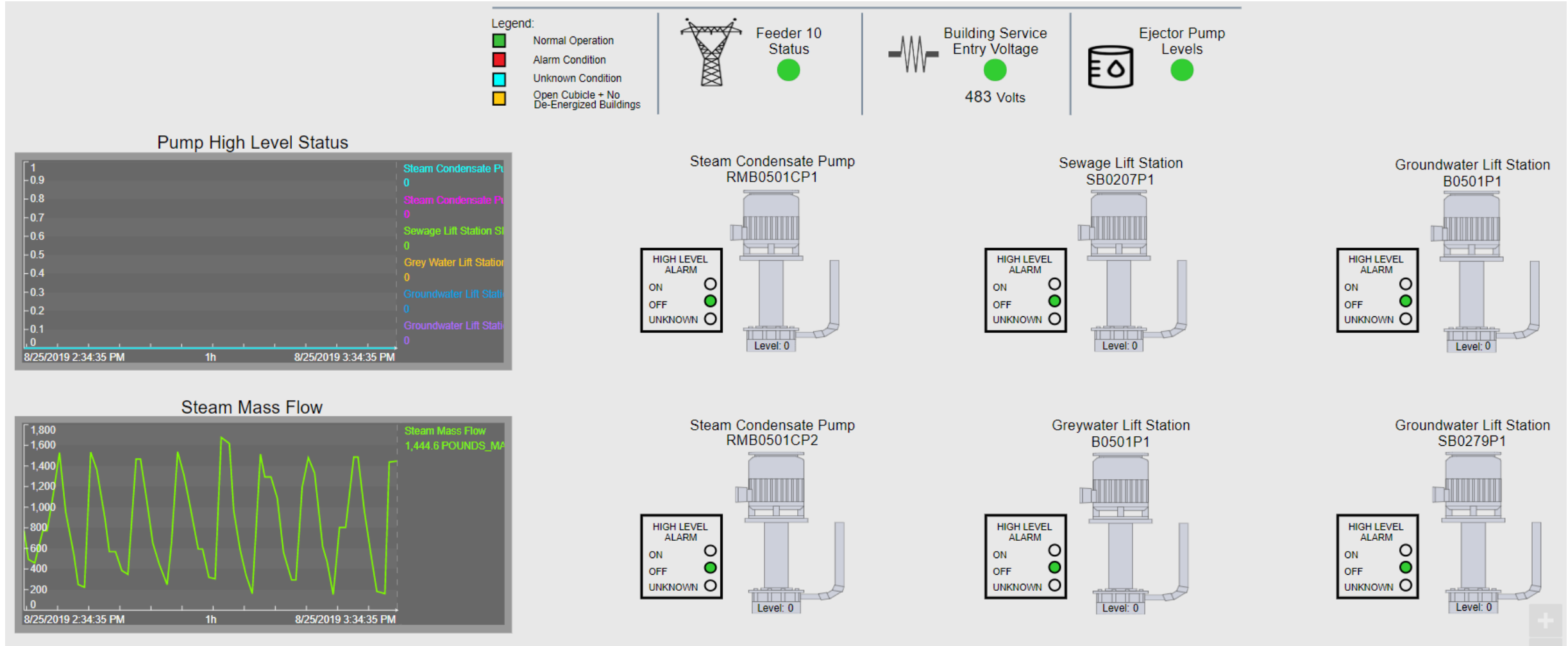
Polling Question

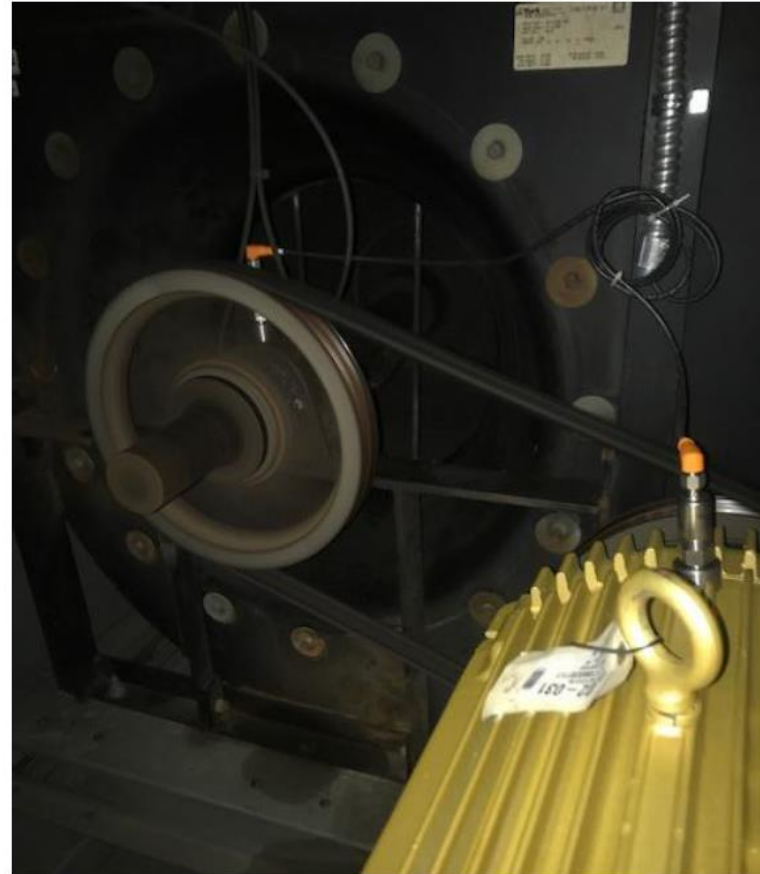
Please make your selection on the right side of the screen.

Your participation is appreciated.



Resilience: Critical Asset Monitoring

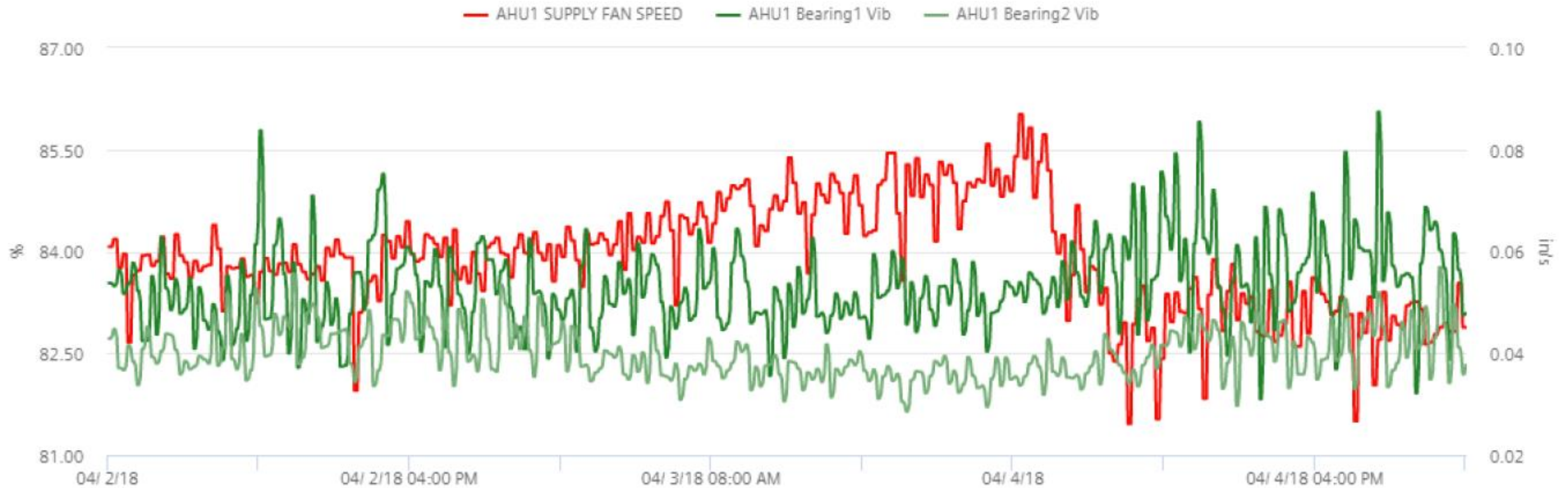




From ANSI/AMCA; Air Movement & Control Association:

VIBRATION	
(Inches/Second Peak)	
0 - .005 In/Sec	EXTREMELY SMOOTH
.005 - .01 In/Sec	VERY SMOOTH
.01 - .02 In/Sec	SMOOTH
.02 - .04 In/Sec	VERY GOOD
.04 - .08 In/Sec	GOOD
.08 - .16 In/Sec	FAIR
.16 - .32 In/Sec	SLIGHTLY ROUGH
.32 - .64 In/Sec	ROUGH
Above .64 In/Sec	VERY ROUGH

Resilience: Critical Asset Monitoring



exclusively sponsored by:



**Improving Healthcare Facilities Operations
with Situational Awareness**

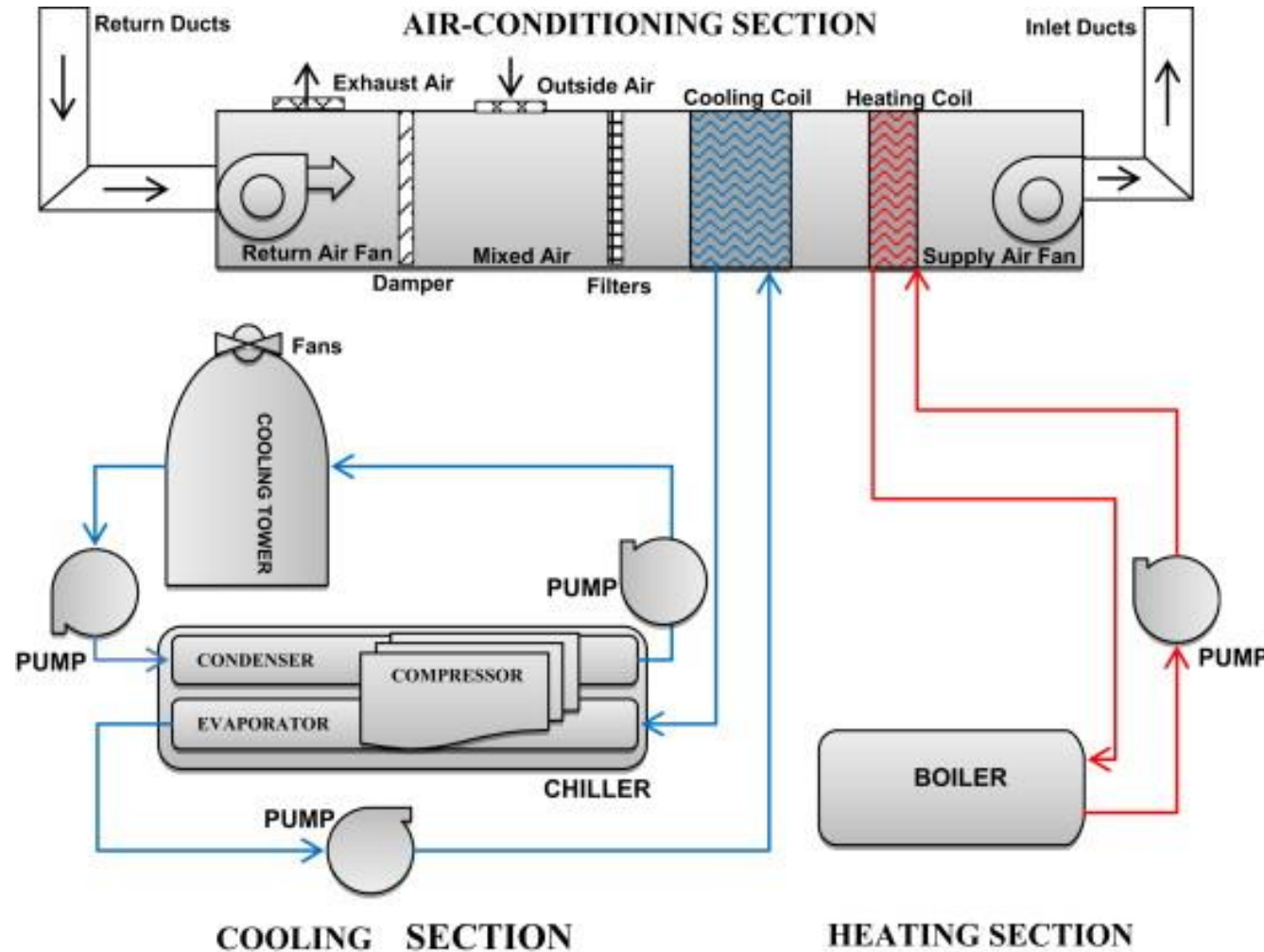


Polling Question

Please make your selection on the right side of the screen.

Your participation is appreciated.





Healthcare Requirements

- Ventilation
- Temperature
- Humidity
- Pressurization
- HEPA Filtration
- Reporting

Reporting & Compliance

Environment of Care; EC.02.05.01 EP15

IAQ & Ventilation Maintenance

Issue

**Protect patients from
airborne contaminants**

Risk

**Hospital Acquired
Infections**

Impact

Harm to patients

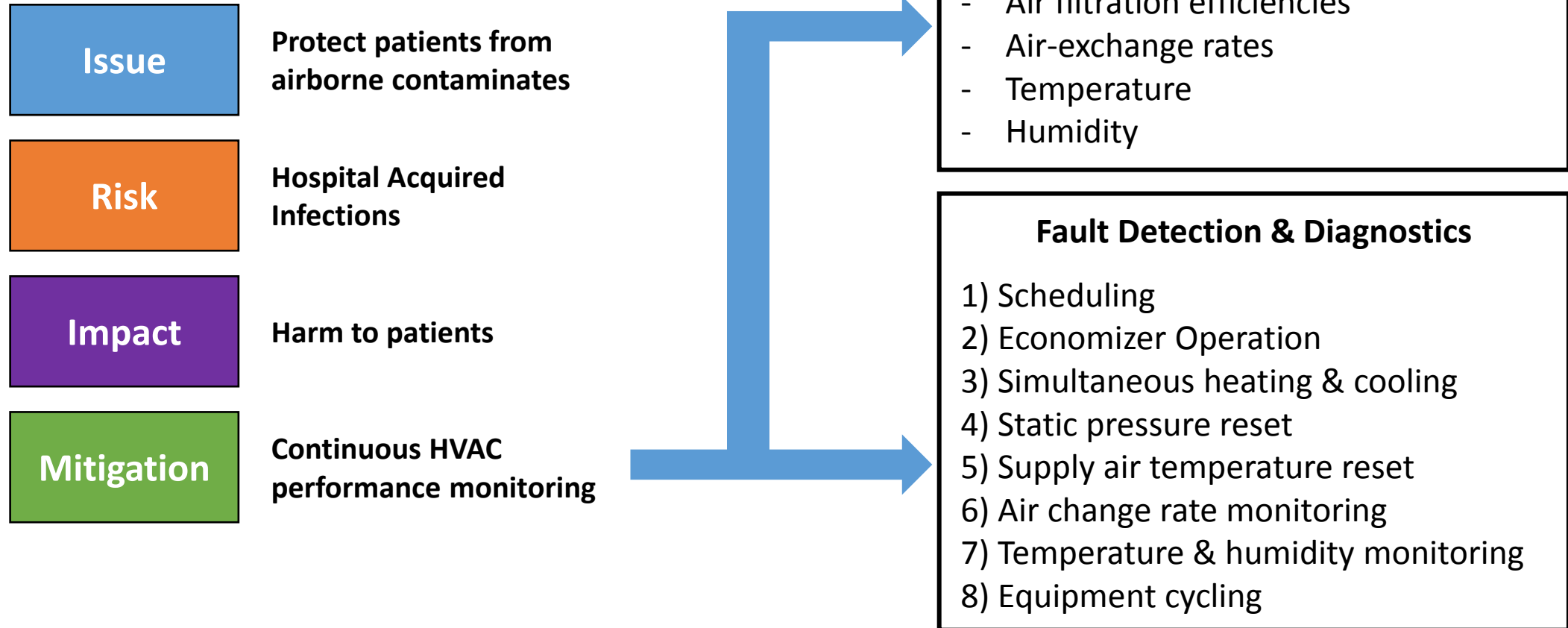
Mitigation

**Continuous HVAC
performance monitoring**

Reporting & Compliance

Environment of Care; EC.02.05.01 EP15

IAQ & Ventilation Maintenance



AP

No lights, big city: Power outage KOs Broadway, Times Square



Screens in Times Square are blacked out and white images seen from July 13, 2013. New York City is scrambling to restore electricity to Manhattan following a power outage that knocked out Times Square's lighting, set off fire alarms and darkened hundreds in the theater district and left businesses without electricity, even this

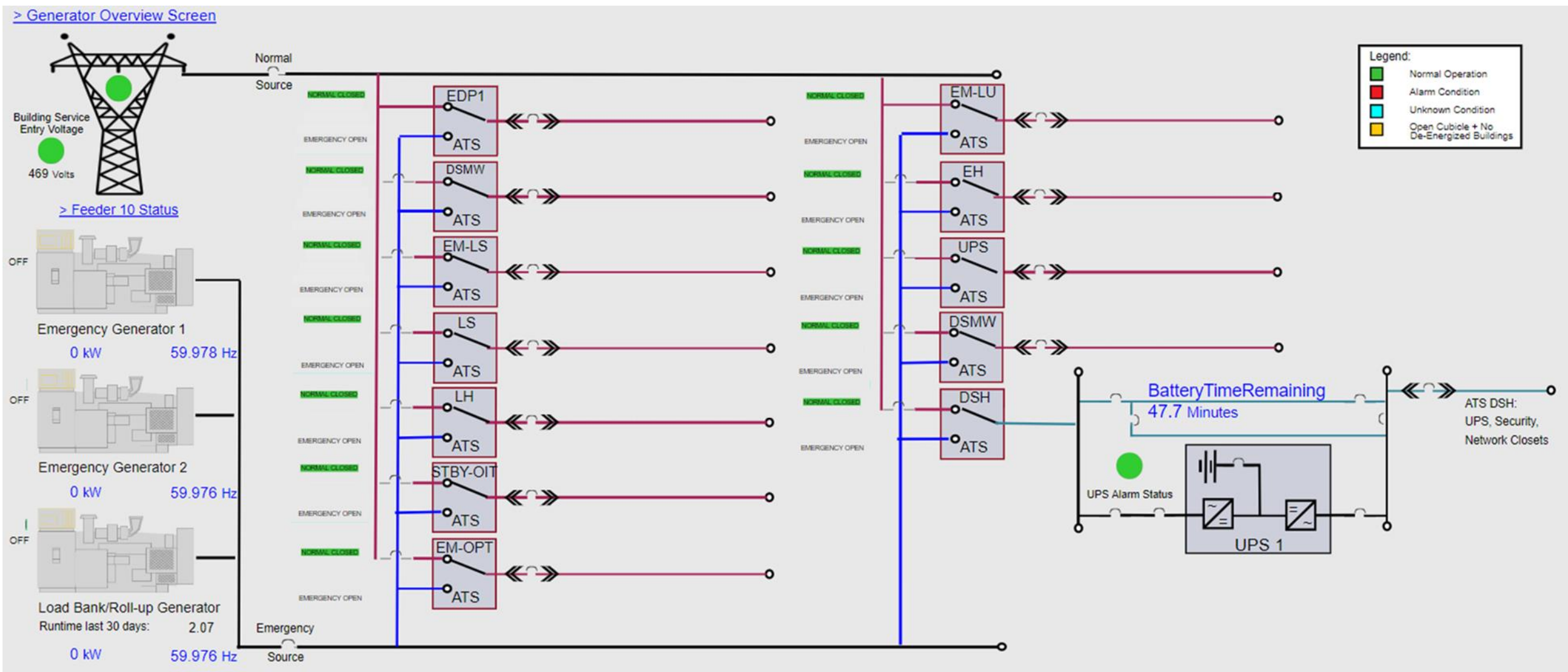
Environment of Care; EC.02.05.03 EP1

Reliable Emergency Electrical Power Source

Issue	Reliable emergency electrical power source;
Risk	Loss of power can cause catastrophic events;
Impact	Harm to patients;
Mitigation	Continuous critical power and utility systems monitoring

Healthcare Facilities Today – Improving Healthcare Facilities Operations with Situational Awareness

Resilience & Compliance



- Resilient Healthcare facilities require situational awareness
- Systems integration and targeted analytics reduce risk, improve the environment of care, and reduce operating costs
- Analytics-ready time-series data is critical

Q&A



Eoin O'Driscoll

Practice Lead, Critical
Infrastructure Protection

eoin.odriscoll@dsainc.com



Scott Smith

Industry Principal for Facilities
and Data Centers

ssmith@osisoft.com

